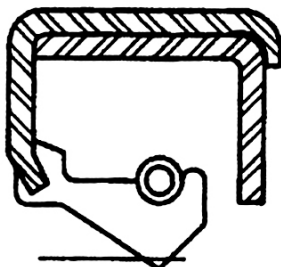
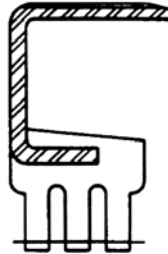


**SA**


ISO 9001:2000	DIMENSIONS			DESIGN	MATERIAL	CROSS REFERENCE
Part Number	Shaft (I.D.)	Bore (O.D.)	Width	Letter Designation		C/R or TCM
	inch					
OSL1500X2502X0312TB	1.5000	2.5020	0.3120	TB	NCC	15253TB
OSL1500X2623X0250VH		2.6230	0.2500	VH	NCO	15190
1500X2716X0250VH		2.7160				15209
OSL1500X2758X0500TC		2.7580	0.5000	TC	NCC	15275TC
OSL1562X24371X0375TB	1.5620	4.3710	0.3750	TB	NCC	156243TB
OSL1562X2502X0500SA	1.5620	2.5020	0.5000	SA	NCC	152505SA
OSL1563X2374X0313SB	1.5630	2.3740	0.3130	SB	NCC	15542
1563X2441X0500TB		2.4410	0.5000	TB		156245TB
1563X2502X0313SB		2.5020	0.3130	SB		15655
OSL1618X2575X05CRSA1	1.6180	2.5750	0.5000	CRSA1	NCC	16044
OSL1618X2841X0500CRSA4	1.5180	2.8410	0.5000	CRSA4	NCC	16146
OSL1625X2125X0250SB	1.6250	2.1250	0.2500	SB	NCC	16054
OSL1625X2125X0250VH		2.1250	0.2500	VH	NCO	16055
1625X2328X0438TL7		0.3280	0.4380	TL7		16064
1625X2328X0438VHY		0.3280	0.4380	VHY		16069
OSL1625X2374X0313SB	1.6250	2.3740	0.3130	SB	NCC	16084
1625X2374X0313TB				TB		16085
OSL1625X2437X0313SB		2.4370	SB	16117		
1625X2437X0313TB			TB	16118		
OSL1625X2462X0250OUB		2.4620	0.2500	OUB	NCO	16286
OSL1625X2502X0313SB	1.6250	2.5020	0.3130	SB	NCC	16253SB
1625X2562X0438VHY		2.5620	0.4380	VHY	NCO	16289
OSL1673X2162X0290HMA9	1.6730	2.1620	0.2900	HMA9	NCO	16599

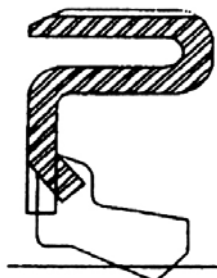
**FIT STRIVES FOR 100% IN ON-TIME DELIVERIES**
**CORPORATE - WEST COAST SALES**  
 47655 Warm Springs Blvd  
 Fremont, CA 94539  
 Toll Free: (800) 808-0348  
 Phone: (510) 623-1688

**139**
**MIDWEST SALES - DISTRIBUTION**  
 2800 Galvin Drive  
 Elgin, IL 60124  
 Toll Free: (877) 808-0348  
 Phone: (847) 836-8200

**UB**


ISO 9001:2000	DIMENSIONS			DESIGN	MATERIAL	CROSS REFERENCE
Part Number	Shaft (I.D.)	Bore (O.D.)	Width	Letter Designation		C/R or TCM
	inch					
OSL1687X2561X0500TB	1.6870	2.5610	0.5000	TB	NCC	168255TB
OSL1688X2328X0313TB	1.6880	2.3280	0.3130	TB	NCC	16657
OSL1688X2650X0290UB 1688X2650X0290X4		2.6500	0.2900	UB X4	NCO	162652UB 16818
OSL1719X2561X0315TB	1.7190	2.5610	0.3150	TB	NCC	17144
OSL1719X2561X0500TB 1719X2561X0500VB 1719X2562X0500VHY	1.7190	2.5610	0.5000	TB	NCC	171255TB
		2.5610		VB		171255VB
		2.5620		VHY	NCO	17146
OSL1750X2250X0188VB	1.7500	2.2500	0.1880	VB		17240
OSL1750X2250X0313SB		2.2500	0.3130	SB	NCC	17231
OSL1750X2374X0313SB 1750X2437X0313SB 1750X2502X0313SB	1.7500	2.3740	0.3130	SB	NCC	17270
		2.4370				17284
		2.5020				17386
OSL1750X2502X0313TB 1750X2561X0313SB		2.5020		TB		17387
		2.5610		SB		17404
OSL1750X2562X0500TB 1750X2623X0313SB	1.7500	2.5620	0.5000	TB	NCC	17406
		2.6230	0.3130	SB		17442
OSL1750X2718X0359TL2 1750X2718X0359VHY		2.7180	0.3590	TL2 VHY	NCO	17618 17617
OSL1750X2750X0313SB		2.7500	0.3130	SB	NCC	17557
OSL1750X2875X0250VH 1750X2875X0313SB	1.7500	2.8750	0.2500	VH	NCO	17671
			0.3130	SB	NCC	17653
OSL1781X2252X0313TB	1.7810	2.2520	0.3130	TB	NCC	17806

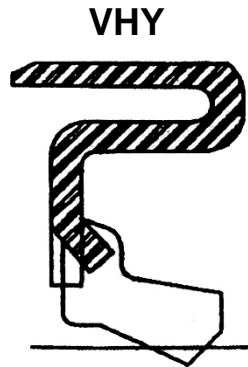
**PLEASE ASK YOUR SALES REPRESENTATIVE REGARDING FIT'S SOURCING CAPABILITIES**

**VH**


ISO 9001:2000	DIMENSIONS			DESIGN	MATERIAL	CROSS REFERENCE	
Part Number	Shaft (I.D.)	Bore (O.D.)	Width	Letter Designation		C/R or TCM	
	inch						
OSL1781X2502X0313SA	1.7810	2.5020	0.3130	SA	NCC	17810	
OSL1875X2623X0313SB	1.8750	2.6230	0.3130	SB	NCC	18580	
1875X2623X0313TB		2.6230		18263TB			
1875X2750X0313TB		2.7500		18273TB			
OSL1875X3000X0250VH		3.0000	0.2500	VH	NCO	18823	
OSL1875X3160X0770CRWA31	1.8750	3.1600	0.7700	CRWA31	PCC	18891	
OSL1938X2437X0250SB	1.9380	2.4370	0.2500	SB	NCC	19212	
1938X2502X0281VH		2.5020	0.2810	VH	NCO	19219	
OSL1938X2686X0304TB		2.6860	0.3040	TB	NCC	19237	
1938X2686X0313TB			0.3130			192683TB	
OSL1938X2762X0500CRSA1	1.9380	2.7620	0.5000	CRSA1	NCC	19273	
1938X3000X0313SB		3.0000	0.3130	SB		19359	
OSL2000X2562X0234VB	2.0000	2.5620	0.2340	VB	NCO	19753	
2000X2622X0280HMA9		2.6220	0.2800	HMA9		19743	
2000X2623X0250VH		2.6230	0.2500	VH		19763	
OSL2000X2623X0313SB	2.0000	2.6230	0.3130	SB	NCC	19760	
2000X2745X0230VB		2.7450	0.2300	VB	NCO	20272VB	
OSL2000X2750X0313SB		2.7500		0.3130	SB	NCC	19831
2000X2750X0313TB				TB	19832		
OSL2000X2750X0500SA				0.5000	SA		20275SA
OSL2000X2875X0313SB	2.0000	2.8750	0.3130	SB	NCC	19886	
2000X2997X0375TA		2.9970	0.3750	TA		19970	
2000X3000X0313SB		3.0000	0.3130	SB		19992	

**WHETHER BEARINGS OR SPECIAL ORDER PRODUCTS, FIT CAN SUPPLY YOUR NEEDS**
**CORPORATE - WEST COAST SALES**  
 47655 Warm Springs Blvd  
 Fremont, CA 94539  
 Toll Free: (800) 808-0348  
 Phone: (510) 623-1688

**141**
**MIDWEST SALES - DISTRIBUTION**  
 2800 Galvin Drive  
 Elgin, IL 60124  
 Toll Free: (877) 808-0348  
 Phone: (847) 836-8200



ISO 9001:2000	DIMENSIONS			DESIGN	MATERIAL	CROSS REFERENCE
Part Number	Shaft (I.D.)	Bore (O.D.)	Width	Letter Designation		C/R or TCM
	inch					
OSL2000X3000X0313TB	2.0000	3.0000	0.3130	TB	NCC	19993
2000X3061X0250VH		3.0610	0.2500	VH	NCO	20044
OSL2000X3061X0375SB		3.0610	0.3750	SB	NCC	20045
OSL2000X3061X0500TA		3.0610	0.5000	TA		20054
2000X3371X0438TA		3.3710	0.4380			20125
OSL2000X3623X0250VH	2.0000	3.6230	0.2500	VH	NCO	20148
2000X3623X0438SA			0.4380	SA	NCC	20144
OSL2125X2875X0250VB	2.1250	2.8750	0.2500	VB	NCO	21101
OSL2125X2875X0438SB			0.4380	SB	NCC	21098
2125X2875X0438TA				TA		21108
OSL2125X2875X0438TB			2.8750	0.4380	TB	NCC
2125X3000X0313TA	3.0000	0.3130			TA	VCC
OSL2125X3000X0375SB	2.1250	3.0000	0.3750	SB	NCC	21163
OSL2125X3061X0500TA			0.5000	TA		21213
2125X3264X0500TB				3.2640	TB	21325TB
OSL2125X3371X0313TB			2.1250	3.3710	0.3130	TB
2180X3000X0495KB-H	2.1800	3.0000	0.4950	KB-H	NCC	218304KB-H
2201X3519X0591HMSA16	2.2010	3.5190	0.5910	HMSA16		21955
OSL2250X3000X0375SB	2.2500	3.0000	0.3750	SB	NCC	22353
2250X3061X0250VH		3.0610	0.2500	VH	NCO	22392
OSL2250X3061X0250VHY	2.2500	3.0610	0.2500	VHY	NCO	223062VHY
OSL2250X3189X0438SB		3.1890	0.4380	SB	NCC	22424
2250X3251X0375SB				3.2510		0.3750

**OTHER SEALS AVAILABLE, INCLUDING METRIC SIZES**

**CORPORATE - WEST COAST SALES**  
 47655 Warm Springs Blvd  
 Fremont, CA 94539  
 Toll Free: (800) 808-0348  
 Phone: (510) 623-1688

**MIDWEST SALES - DISTRIBUTION**  
 2800 Galvin Drive  
 Elgin, IL 60124  
 Toll Free: (877) 808-0348  
 Phone: (847) 836-8200